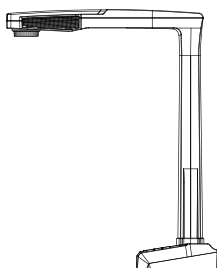


# Joy-BookScan Laser Series

## Quick Instruction

### Accessories Check

☐ Book Scanner



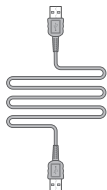
☐ Remote



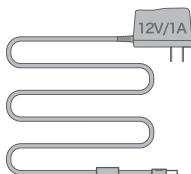
☐ Application Software  
(CD-ROM disk)



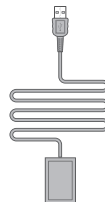
☐ USB Cable



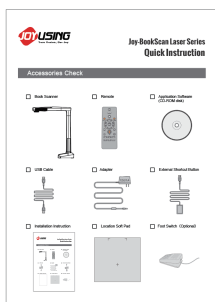
☐ Adapter



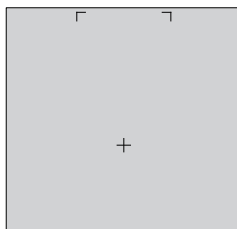
☐ External Shortcut Button



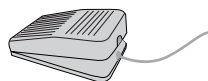
☐ Installation Instruction



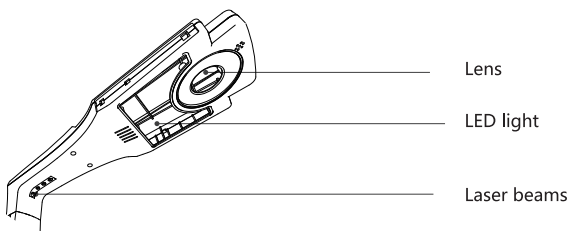
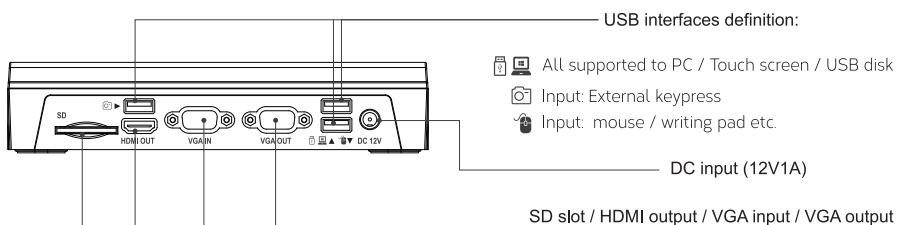
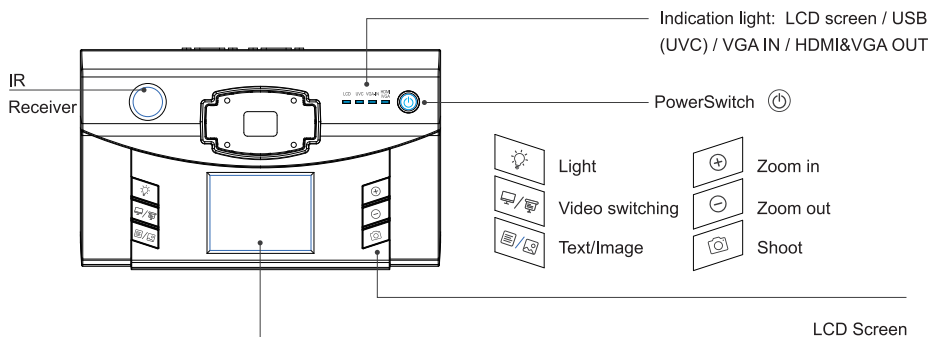
☐ Location Soft Pad



☐ Foot Switch (Optional)



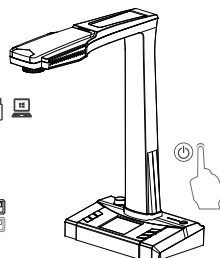
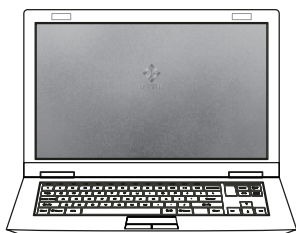
# Keypress and interface instruction



## Device connection

### 1: PC Mode

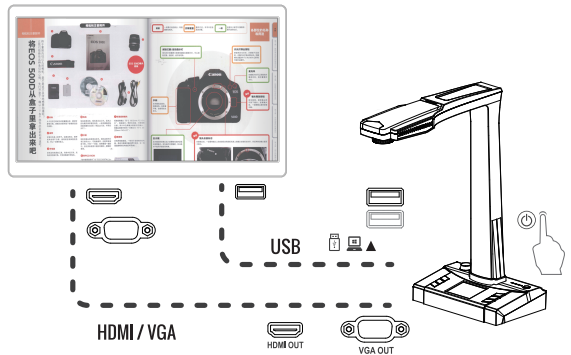
- Install software on PC
- Connect book scanner to PC with USB cable
- Connect power cable and press power switch
- Open the software, start scanning or presenting
- Scanned files saved in computer



## 2: PC-free Mode

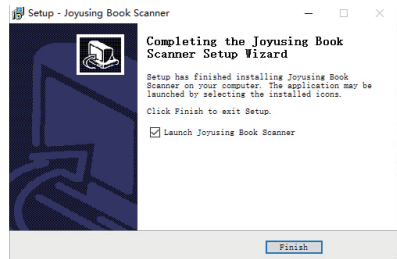
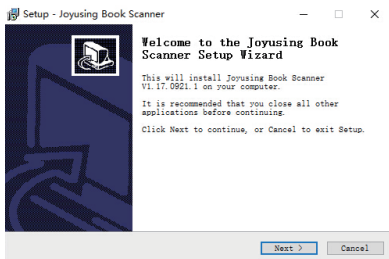
A. As Book Scanner: insert the SD card to scanner, power it on and connect the shortcut button, the scan document would be saved to SD card.

B. As Visual Presenter: use a VGA or HDMI connection to stream live images directly to your projector or monitor, press power switch to HDMI or VGA.




## Software installation

Install software, follow the default installation.



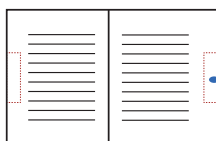
## Operation

Double Click application program ,  
Open the software main window,  
Locate the item on pad and click scan key ,  access to scanning window.

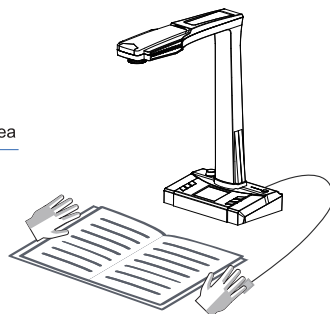


# Cautions

## 1, Gesture:

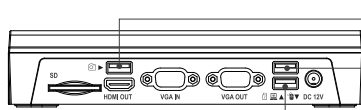


Finger placement area



## 2, USB interfaces connection:

The function of USB interfaces are different, please connect them as following instructions



Shooting button



Connect to Computer/Touch Monitor  
(As Visual Presenter)/ USB flash disk etc.



Connect to mouse

## 3, Notice:

- 1) . When scanning, please make sure the emitted 4 laser beams are all laid on the book page, so that the scanned result would not fail you.
- 2) . When scanning with your fingers to fasten the book, please make sure your fingers are put at the mid of two sides of a book.
- 3) . Please make sure you are not scanning books in a circumstance with strong light, as there will be light interference to the laser, and weaken the scanning performance.
- 4) . Please don't move the document or turn pages while scanning, it will influence the scanning result.

# After-Sale Service



## Warranty Card

Address: \_\_\_\_\_

Email: \_\_\_\_\_

Zip Code: \_\_\_\_\_

Date of Purchase: \_\_\_\_\_

Number of Invoice: \_\_\_\_\_



## Qualification Certificate

QC \_\_\_\_\_

## Joyusing Technology Co., Ltd.

Website: [www.joyusing.com](http://www.joyusing.com)

Tel: 0086-591-86399086

Email: [sales@joyusing.com](mailto:sales@joyusing.com)

Address: No.27 Yangzhou Road Cangshan District, Fuzhou, Fujian, China